

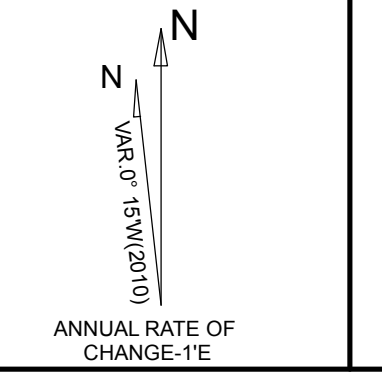
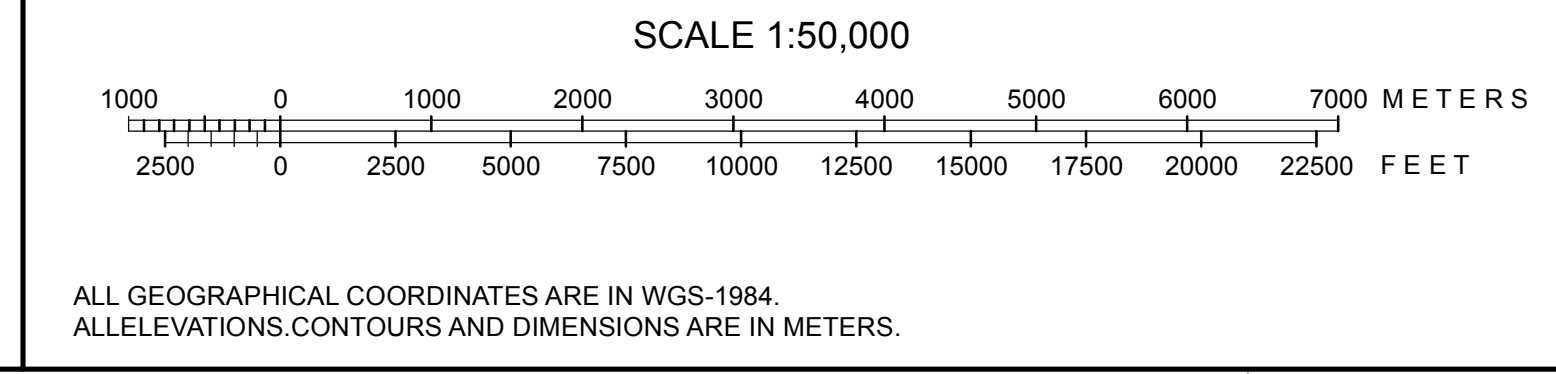
PATNA AIRPORT
 LATITUDE 25° 35' 37.0"N
 LONGITUDE 85° 05' 30.6"E
 ARP ELEVATION 51.2M(168FT.)
 RWY ELEVATION 51.8M(170FT.)
 RPYW 07/25 2286Mx45M
 PROPRWY07/25 2846Mx45M

LIST OF NAV AIDS

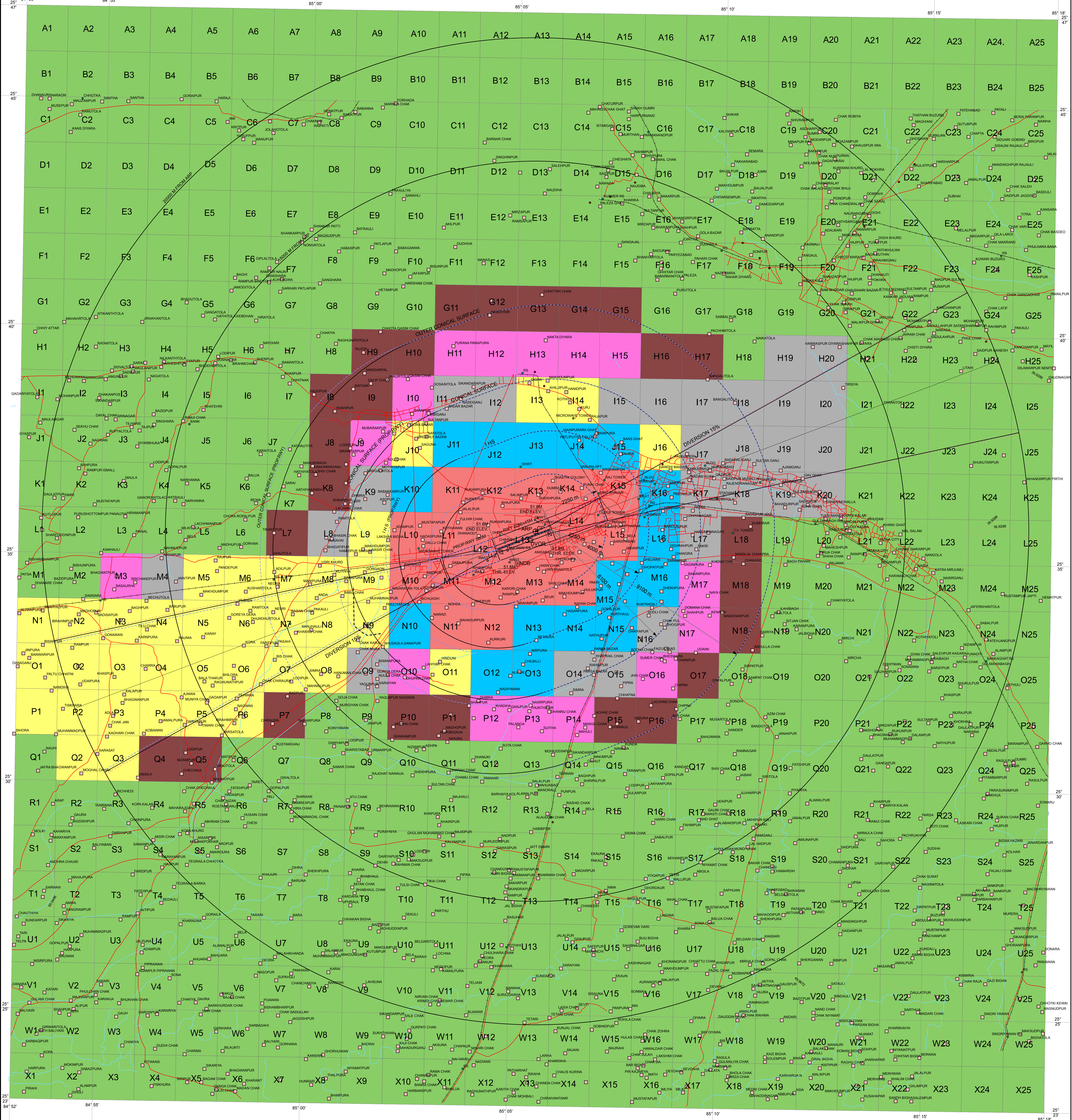
S. NO.	NAV AIDS	CO-ORDINATES	TOP ELEV.
1.	NDB	25° 35' 54.5"N 85° 05' 7.7"E	78.94 M
2.	DVOR	25° 35' 25.5"N 85° 05' 23.7"E	59.13 M
3.	LLZ	25° 35' 11.87"N 85° 04' 33.55"E	53.77 M
4.	GP	25° 35' 37.67"N 85° 05' 33.50"E	66.22 M

LEGEND

- ROADS
- RAILWAY LINE
- TELEPHONE LINE
- POWER LINE
- RIVER/PONDS/LAKE/TANK/ETC.
- CONTOURS



COLOUR CODED ZONING MAP OF PATNA



COLOUR LEGEND

NO TO BE OBTAINED FROM AAI	PERMISSIBLE TOP ELEV. 115M AMSL OR BELOW	PERMISSIBLE TOP ELEV. 100M AMSL OR BELOW
PERMISSIBLE TOP ELEV. 90M AMSL OR BELOW	PERMISSIBLE TOP ELEV. 130M AMSL OR BELOW	PERMISSIBLE TOP ELEV. 145M AMSL OR BELOW
PERMISSIBLE TOP ELEV. 100M AMSL OR BELOW		

NOTES

1. THIS CCZM HAS BEEN PREPARED IN ACCORDANCE WITH GSR 751(E) RULE 5 SUB RULE 1 IN RESPECT OF OBSTACLE LIMITING SURFACES OF PATNA AIRPORT AND DOES NOT INCLUDES JURISDICTION OF DEFENCE AIRPORTS. LOCAL AUTHORITIES MAY REFER TO DEFENCE AUTHORITIES IN CASE ANY SITE FALLS WITHIN JURISDICTION OF DEFENCE AIRPORTS.

2. THE HEIGHT PERMITTED BY CCZM ARE INDICATED ABOVE MEAN SEA LEVEL i.e. AMSL BUILDING HEIGHT PERMITTED i.e. ABOVE GROUND LEVEL (AGL) WILL BE CALCULATED CCZM HEIGHT (-) SITE ELEVATION.

VERSION	1.0	DATE	07-01-2016
PREPARED BY	(SR.SUPD)	(SHARDA KHANNA)	
CHECKED BY	(SR.MANAGER/CARTO)	(LAJPAT RAI)	
RECOMMENDED BY	(JTGANOC)	(D.BADOLA)	
APPROVED BY	(S.K.PURWAR)		

AAI/158.CCZM/PATNA/2016/CARTO